



**India Meteorological Department
(Ministry of Earth Sciences)**

HOURLY UPDATE ON CYCLONIC STORM 'GULAB'

BULLETIN NO. 11

DATE: 26-09-2021

TIME OF ISSUE: 2200 HRS IST

DATE/TIME (IST) OF OBSERVATION	BASED ON 26-09-2021 (2130 HRS IST)
LOCATION LATITUDE/LONGITUDE	<p>THE CYCLONIC STORM 'GULAB' (PRONOUNCED AS GUL-AAB) OVER NORTH COASTAL ANDHRA PRADESH MOVED NEARLY WESTWARDS WITH A SPEED OF 26 KMPH DURING LAST 06 HOURS, LAY CENTRED AT 2130 HRS IST OVER NORTH COASTAL ANDHRA PRADESH NEAR LAT. 18.4°N AND LONG. 83.6°E, ABOUT 170 KM SOUTH-SOUTHWEST OF GOPALPUR (ODISHA) & 50 KM WEST-NORTHWEST OF KALINGAPATNAM (ANDHRA PRADESH).</p> <p>IT IS LIKELY TO MOVE NEARLY WESTWARDS AND WEAKEN INTO A DEEP DEPRESSION DURING NEXT 05 HOURS.</p>
CURRENT INTENSITY NEAR CENTRE	65-75 KMPH GUSTING TO 85 KMPH
PAST MOVEMENT	MOVED NEARLY WESTWARDS WITH A SPEED OF 26 KMPH DURING PAST 06 HOURS.
FORECAST MOVEMENT AND INTENSITY	IT IS LIKELY TO WEAKEN INTO DEEP DEPRESSION DURING NEXT 06 HOURS AND MOVE NEARLY WESTWARDS.
FORECAST RAINFALL	<ul style="list-style-type: none">• 26TH SEP: LIGHT TO MODERATE RAINFALL AT MOST PLACES WITH HEAVY TO VERY HEAVY FALLS AT A FEW PLACES & EXTREMELY HEAVY RAINFALL (≥ 20 CM) AT ISOLATED PLACES VERY LIKELY OVER SOUTH ODISHA AND NORTH COASTAL ANDHRA PRADESH; HEAVY TO VERY HEAVY FALLS AT ISOLATED PLACES IS ALSO LIKELY OVER TELANGANA AND HEAVY FALLS AT ISOLATED PLACES OVER NORTH INTERIOR ODISHA & CHHATTISGARH.• 27TH SEP: LIGHT TO MODERATE RAINFALL AT MOST PLACES WITH HEAVY TO VERY HEAVY & EXTREMELY HEAVY RAINFALL (≥ 20 CM) AT ISOLATED PLACES VERY LIKELY OVER SOUTH CHHATTISGARH; HEAVY TO VERY HEAVY FALLS AT ISOLATED PLACES OVER ODISHA, TELANGANA & VIDARBHA AND HEAVY RAINFALL AT ISOLATED PLACES OVER COASTAL WEST BENGAL & NORTH CHATTISGARH.

FORECAST WIND SPEED (KMPH)	60-70 KMPH GUSTING TO 80 KMPH FOR NEXT FIVE HOURS AND GRADUALLY DECREASE THEREAFTER
FORECAST STORM SURGE	TIDAL WAVE OF ABOUT 0.5 M HEIGHT ABOVE THE ASTRONOMICAL TIDE LIKELY TO INUNDATE LOW LYING AREAS OF SRIKAKULAM, VIZIANAGARAM, GANJAM DISTRICTS DURING NEXT TWO HOURS

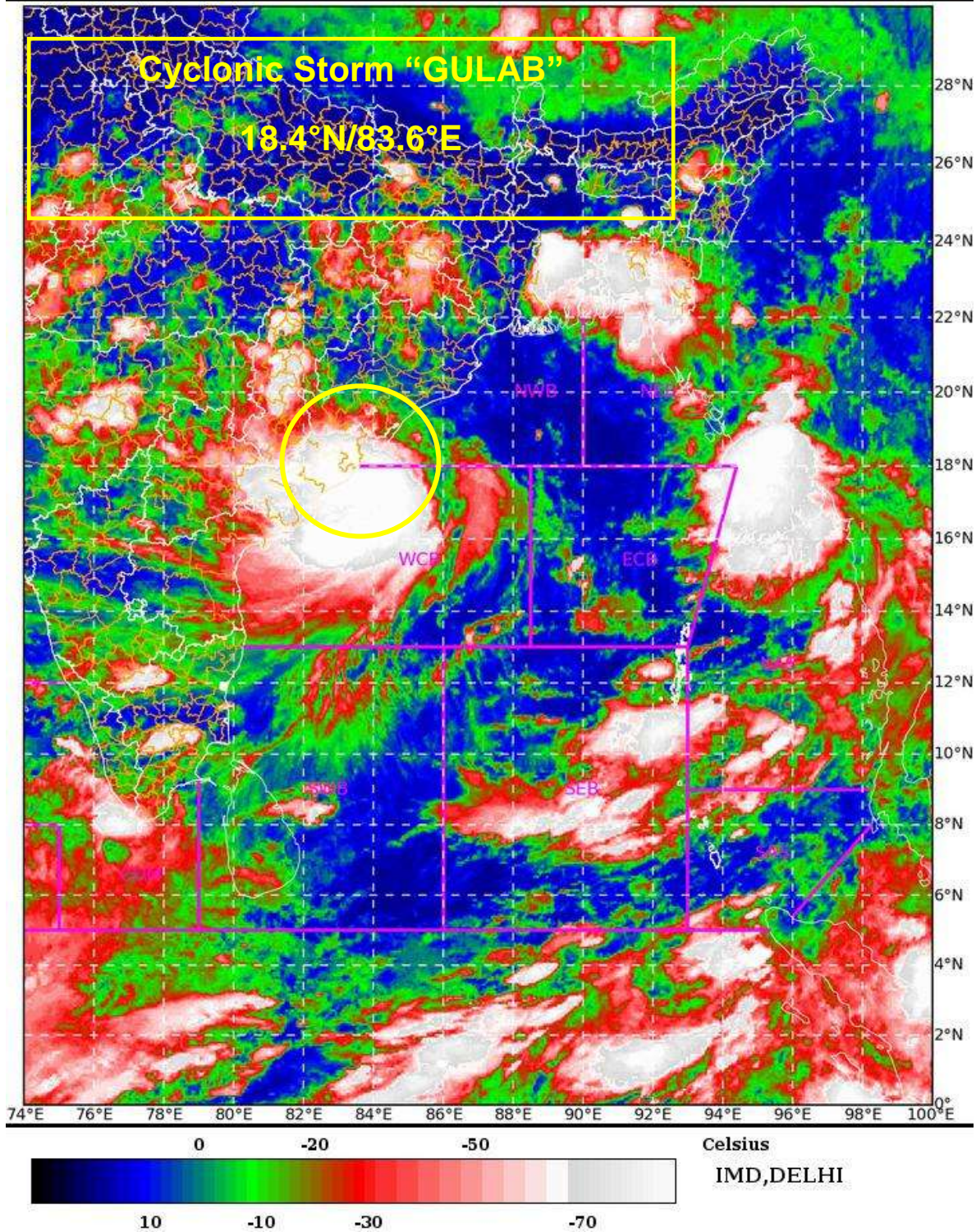
SAT : INSAT-3D IMG

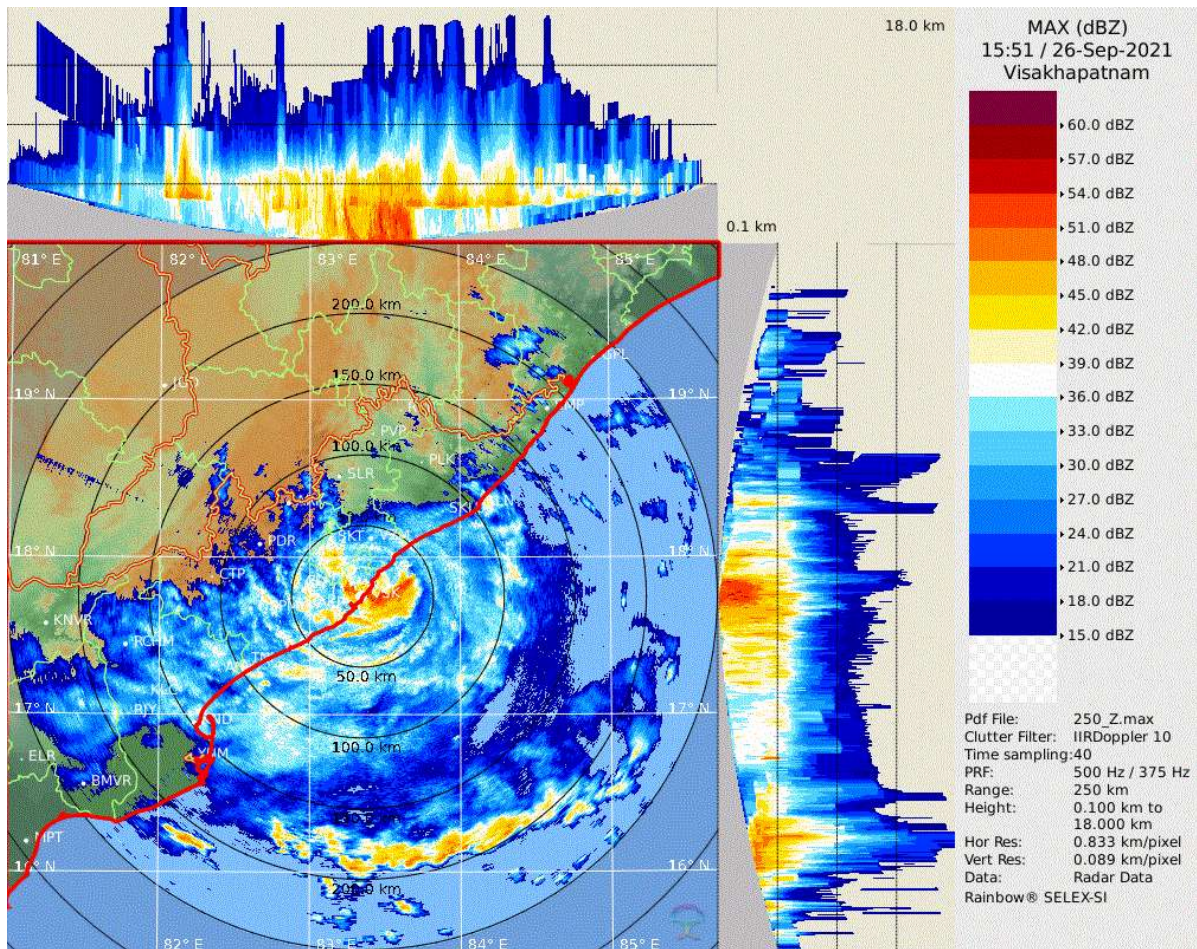
26-09-2021/(1530 to 1556) GMT

IMG_TIR1_TEMP 10.8 um

26-09-2021/(2100 to 2126) IST

L1C Mercator

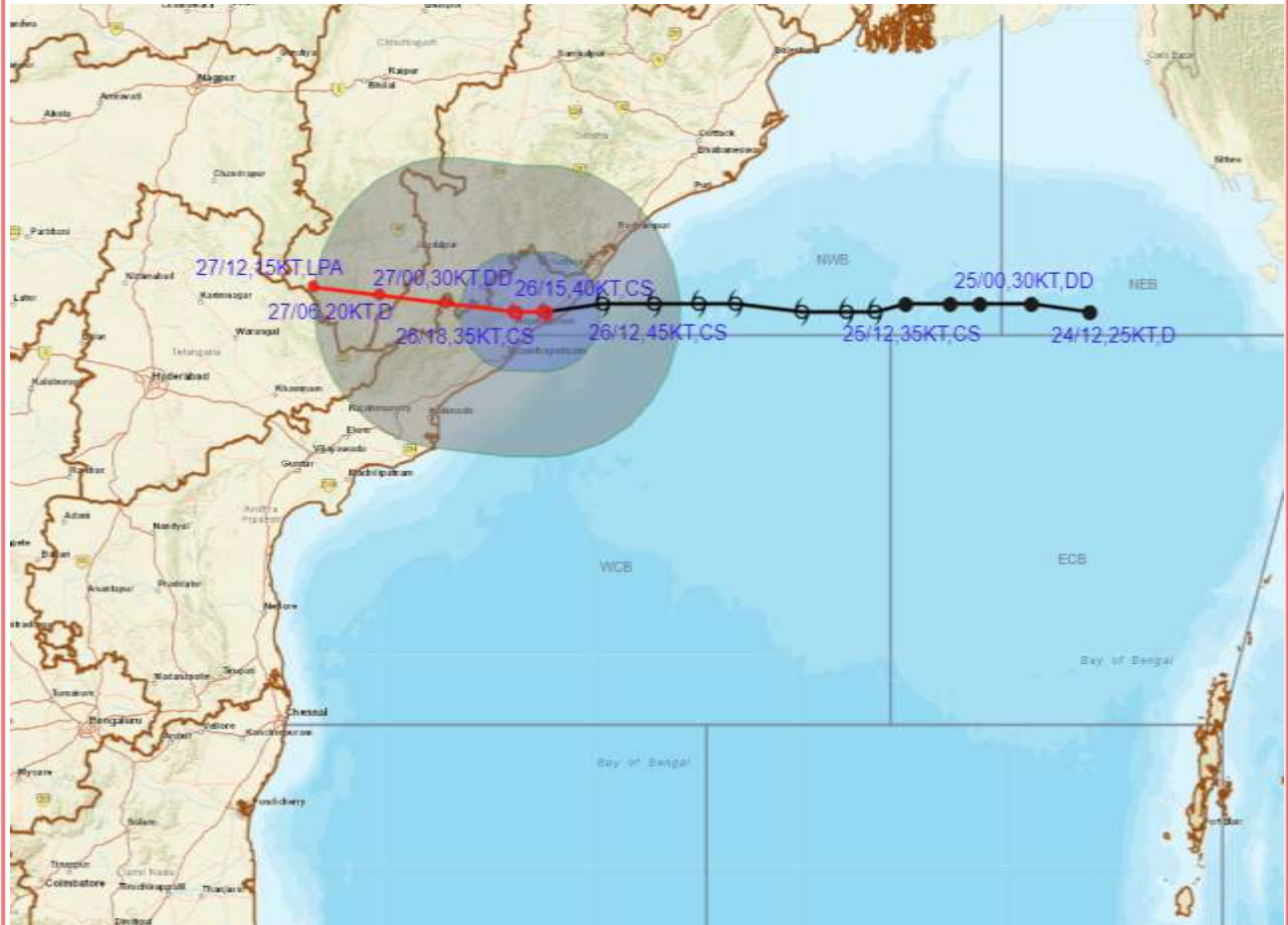




Reflectivity imagery from Doppler weather RADAR Visakhapatnam based on 2131 hrs IST of 26th September 2021.



OBSERVED AND FORECAST TRACK ALONGWITH QUADRANT WIND DISTRIBUTION OF CYCLONIC STORM GULAB OVER NORTH COASTAL ANDHRA PRADESH BASED ON 1500 UTC OF 26TH SEPTEMBER, 2021



DATE/TIME IN UTC

IST=UTC + 0530

L: LOW PRESSURE AREA

WML: WELL MARKED LOW PRESSURE AREA

D: DEPRESSION (17-27 KT)

DD: DEEP DEPRESSION (28-33 KT)

CS: CYCLONIC STORM (34-47 KT)

SCS: SEVERE CYCLONIC STORM (48-63KT)

VSCS: VERY SEVERE CYCLONIC STORM (64-89 KT)

ESCS: EXTREMELY SEVERE CYCLONIC STORM (90-119 KT)

SuCS: SUPER CYCLONIC STORM (≥ 120 KT)

- LESS THAN 34 KT
- 34-47 KT
- ≥ 48 KT
- OBSERVED TRACK
- FORECAST TRACK
- ▲ CONE OF UNCERTAINTY
- AREA OF MAXIMUM SUSTAINED WIND SPEED:
- 28-33 KT (52-61 KMPH)
- 34-49 KT (62-91 KMPH)
- 50-63 KT (92-117 KMPH)
- ≥ 64 KT (≥ 118 KMPH)

IMPACT OVER THE SEA

MSW (knot/kmph)	Impact	Action
28-33 (52-61)	Very rough seas	Total suspension of fishing operations
34-49 (62-91)	High to very high seas	Total suspension of fishing operations
50-63 (92-117)	Very high seas	Total suspension of fishing operations
≥ 64 (≥ 118)	Phenomenal	Total suspension of fishing operations



OBSERVED AND FORECAST TRACK OF CYCLONIC STORM GULAB OVER NORTH COASTAL ANDHRA PRADESH BASED ON 1500 UTC OF 26TH SEPTEMBER, 2021



DATE/TIME IN UTC

IST=UTC + 0530

L: LOW PRESSURE AREA

WML: WELL MARKED LOW PRESSURE AREA

D: DEPRESSION (17-27 KT)

DD: DEEP DEPRESSION (28-33 KT)

CS: CYCLONIC STORM (34-47 KT)

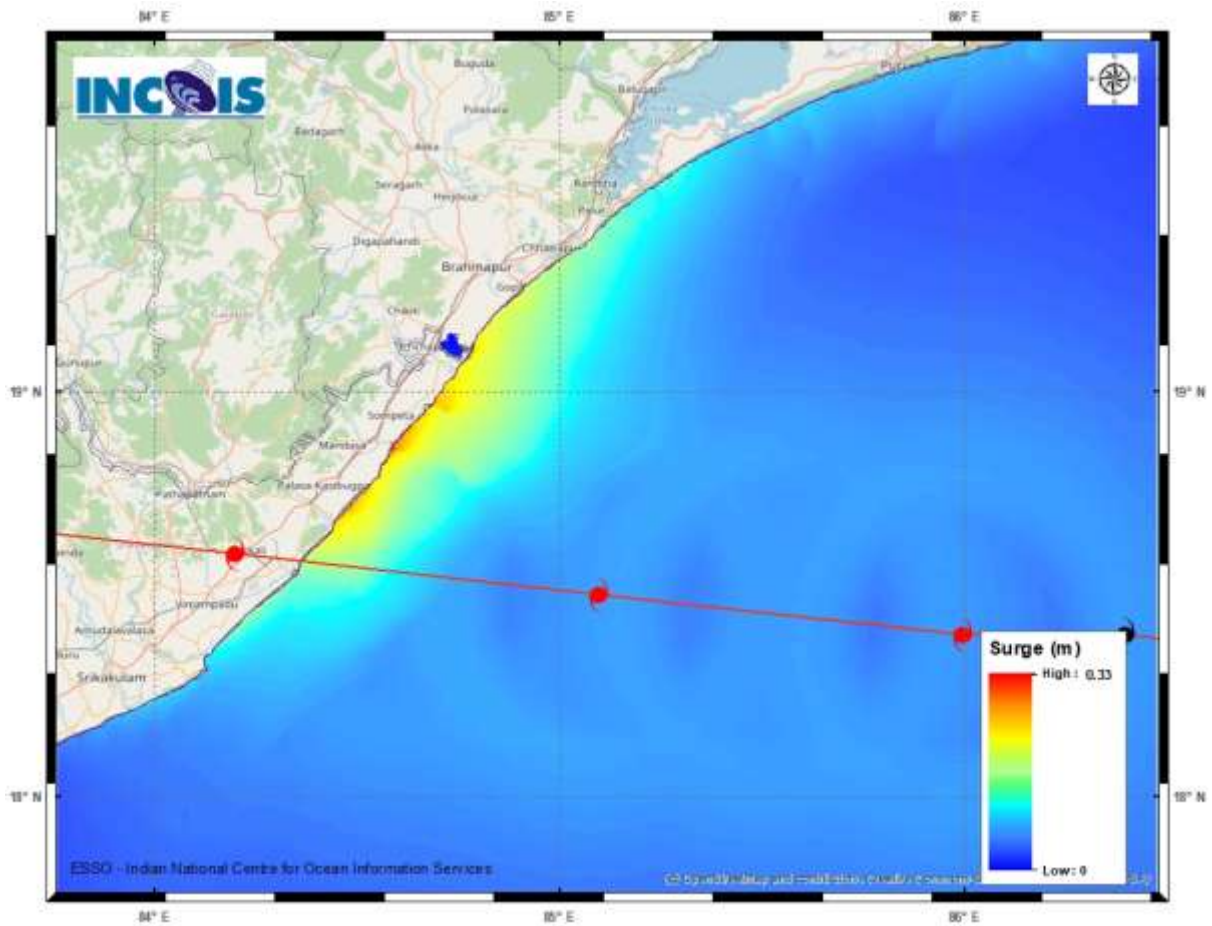
SCS: SEVERE CYCLONIC STORM (48-63KT)

VSCS: VERY SEVERE CYCLONIC STORM (64-89 KT)

ESCS: EXTREMELY SEVERE CYCLONIC STORM (90-119 KT)

SuCS: SUPER CYCLONIC STORM (\geq 120 KT)

- LESS THAN 34 KT
- 34-47 KT
- \geq 48 KT
- OBSERVED TRACK
- FORECAST TRACK
- CONE OF UNCERTAINTY



Storm surge graphics from INCOIS for the current system (BoB/04/2021)

Peak storm surge upto 0.5 m over and above the astronomical tide is noticed at (i) Sompeta and Tekkali of Srikakulam district, Andhra Pradesh and (ii) Brahmapur of Ganjam district, Odisha.